

**CTM BX-2/CTM BX-2-IO TOP HAT RAIL MODULE FOR 1 CTM CARD**

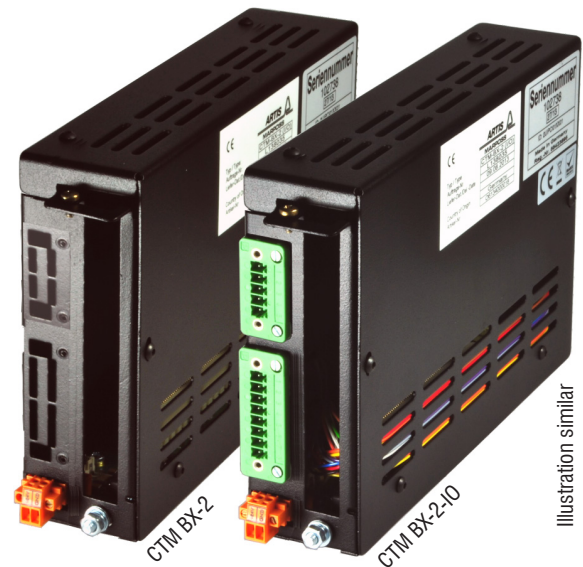


Illustration similar

**Properties**

- Top hat rail module for installation of one ARTIS CTM card
- 1 PCI-slot (160 mm x 100 mm)
- Mounting on standard mounting rail acc. to DIN EN 60715
- Compact design

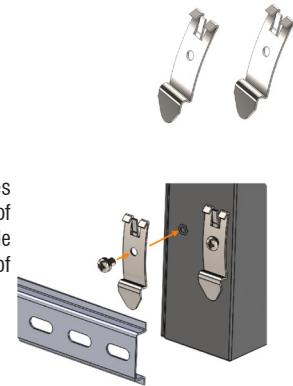
**Application and functionality**

The CTM-BX-2 module is used for application conditions, which do not permit integrating the CTM monitoring system directly into the machine control.

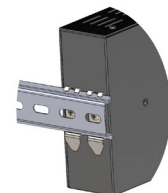
Two product variants are available:

1. CTM BX-2 for CTM V5 or for CTM V6
2. CTM BX-2-IO with integrated IO-terminal box exclusively for CTM V6

1. Fasten the clips in the holes provided at the back side of the CTM BX-2-IO-module (2 clips included in scope of supply).



2. Clip the CTM BX-2-IO-module onto the top hat rail.



3. Front view of the mounted modules.

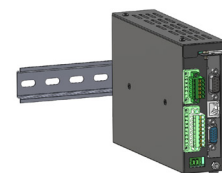
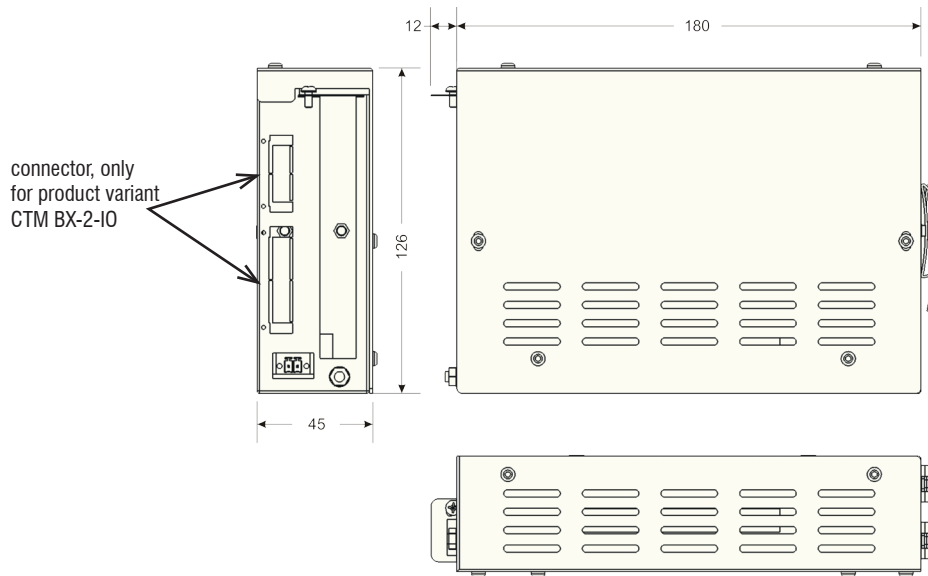


Illustration similar



GENERAL DATA	CTM BX-2
ARTICLE NUMBER	06134000002
DIMENSIONS	see drawing * incl. projection 192 mm
WEIGHT	0.294 kg
MATERIAL	Sheet steel, powder coated
DEGREE OF PROTECTION	IP20
OPERATING TEMPERATURE	0 °C ... +55 °C
INSTALLATION	Mounting on standard mounting rail acc. to DIN EN 60715
PCI-SLOT	1 PCI-slot for ARTIS plug-in card (160 mm x 100 mm) <ul style="list-style-type: none"> <li>• transfer of voltage supply only</li> <li>• max. current consumption 5 W</li> </ul>
VOLTAGE SUPPLY	18 – 32 V DC
POWER CONSUMPTION	max. 10 W
IN- AND OUTPUT SIGNALS	not available for this product variant
CONFORMITY	CE

GENERAL DATA	CTM BX-2-IO	
ARTICLE NUMBER	06134000018	
DIMENSIONS	see drawing * incl. projection 192 mm	
WEIGHT	0.330 kg	
MATERIAL	Sheet steel, powder coated	
DEGREE OF PROTECTION	IP20	
OPERATING TEMPERATURE	0 °C ... +55 °C	
INSTALLATION	Mounting on standard mounting rail DIN EN 60715	
PCI-SLOT	1 PCI-Steckplatz für ARTIS Steckkarte (160 mm x 100 mm) <ul style="list-style-type: none"> <li>• transfer of voltage supply only</li> <li>• max. current consumption 5 W</li> </ul>	
VOLTAGE SUPPLY	18 – 32 V DC	
POWER CONSUMPTION	max. 10 W	
IN- AND OUTPUT SIGNALS	4 pre-configured in-/outputs via CTM card:	
	1 channel	4 channels
	Input: Reset, Feed active, Rework, Count Output: Breakage-, Wear-, Missing-alarm, Material contact	Input: Feed active – channel 1, 2, 3, 4 Output: Breakage alarm – channel 1, 2, 3, 4
CONFORMITY	CE	



[www.marposs.com](http://www.marposs.com)

For a full list of address locations, please consult the Marposs official website

ODN6419EN02 - Edition 02/2020 - Specifications are subject to modifications  
© Copyright 2010-2020 MARPOSS S.p.A. (Italy) - All rights reserved.

MARPOSS, and Marposs product names/signs mentioned or shown herein are registered trademarks or trademarks of Marposs in the United States and other countries. The rights, if any, of third parties on trademarks or registered trademarks mentioned in this publication are acknowledged to the respective owners.

Marposs has an integrated system for Company quality, environmental and safety management, with ISO 9001, ISO 14001 and OHSAS 18001 certification.



Download the latest version of this document