



Easy Acquisition software



*...easy to use and
easy to learn basic
SPC software*

PRODUCT FEATURES

Easy Acquisition™ software package is the Marposs basic measuring and SPC software. Its main characteristic is the flexibility: users can develop their own Excel macros in VBA language in order to perform different functions depending on the application. The easy to use and easy to learn approach.

This software was developed specifically for simple manual applications with static acquisition or manually driven dynamic acquisition with a limited sampling rate (40 samples/s).

Easy Acquisition™ runs on an Excel platform and allows the use of a typical Excel worksheet to perform the following functions:

- Acquisition of the measurement value from the Marposs display units E4N and Quick Read, interface units Easy Box™, DigiCrown, GagePod, U-Com, wireless gauges of the Wave family, Quick Digit Bluetooth wireless indicators, third party serial devices.
- Creation and display of measurements with tolerance values and status
- Handling of measurement calibration (if required)
- Data collection of the measurement values
- Basic statistical analysis (SPC) of the collected measurement values (Histogram, Sample Value Chart, X&R Chart)
- Print-out of data collection and SPC values (reporting)
- management of input/output signals to command the acquisition (start/stop, delete, zeroing, etc.) in order to conveniently replace the PC mice and give feedback to the user.

SYSTEM REQUIREMENTS:

- Operating System: Windows® XP SP3 / Windows 7 32 bit and 64 bit version
- Microsoft Excel® 2010 or higher 32 bit standard edition license

The Easy Acquisition software package includes a CD-Rom with software and drivers and a USB dongle to be associated to the PC running the software.

DISPLACEMENT SENSORS

BORE GAUGES LINE

FORKS AND RING GAUGES

BENCH GAUGES

INDICATORS AND ELECTRONIC
DISPLAY UNITS

INTERFACE BOXES
FOR DATA ACQUISITION

SOFTWARE

HOW TO PROGRAM

A simple programming sequence allows, through a limited number of steps, to configure the driver of the product in use and to prepare the Excel worksheet for the measurement acquisition.



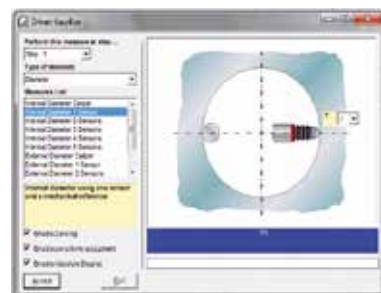
1

1 - Selection of the product driver



2

2 - Driver configuration: programming the hardware in use in order to insert the number and the type of transducers. It is also possible to configure an application with more than one driver and then with different devices



3

3 - Defining measuring step, type of measurement to be carried out and related sensors by means of the Formula Wizard, which simplifies the measurement formula programming



4

4 - Choose the layout of your working page placing the items (measurements bargraph, steps, data collection of the acquired measurement values) in the Excel worksheet

5 - Start working ! Easy Acquisition™ software will provide you automatically the SPC elaboration; statistical data are displayed in both numeric and graphical form (Histogram, Sample Value Chart, X&R Chart)



5

For a full list of address locations, please consult the Marposs official website

D6D01300G0 - Edition 09/2015 - Specifications are subject to modifications
© Copyright 2015 MARPOSS S.p.A. (Italy) - All rights reserved.

MARPOSS, and Marposs product names/signs mentioned or shown herein are registered trademarks or trademarks of Marposs in the United States and other countries. The rights, if any, of third parties on trademarks or registered trademarks mentioned in the present publication are acknowledged to the respective owners.

Marposs has an integrated system to manage the Company quality, the environment and safety, attested by ISO 9001, ISO 14001 and OHSAS 18001 certifications. Marposs has further been qualified EAQF 94 and has obtained the Q1-Award.

