

RS-M10 • RS-M12 • RS-M16 PIEZOELECTRIC FORCE SENSOR

Properties

- High sensitivity to detect smallest process force variations
- Embedded charge amplifier
- Suitable for rough environmental conditions
- Compact design

Typical applications

- Typical applications: Lathe finishing and hard turning
- Different sizes available
- Using the respective measuring transducer, it suits all ARTIS monitoring systems



Illustration similar

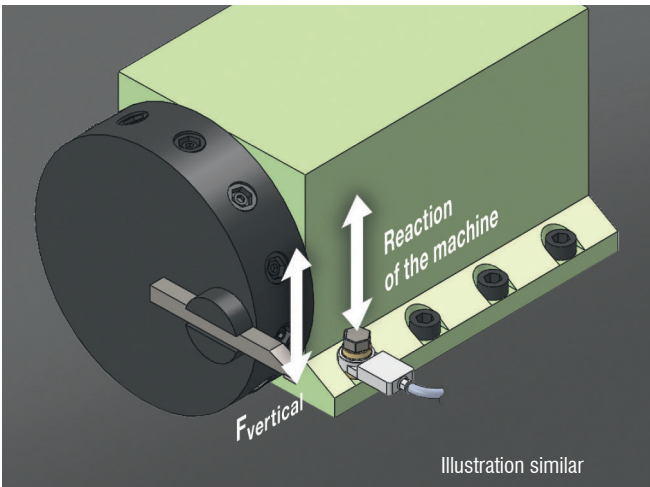
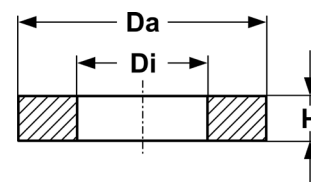
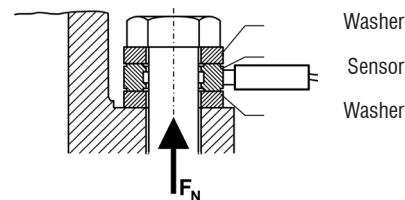
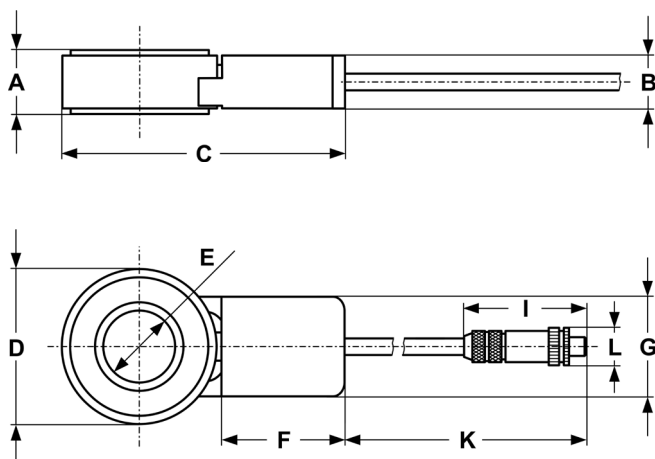


Illustration similar

RS-Mxx Sensor connection (pin side)

PIN	Description	Cable CMD
1, 6	Ground (bridged in connector)	white, pink
2	Measuring range Gnd (1145 N) 15 V (6510 N)	brown
3	Reset → 0 V Amplifier active → 15 V Reset active	green
5	Signal output ±10 V	gray
8	Supply voltage + 15 V	red
4, 7	n.c.	yellow, blue





	M10 03PZ0211021	M12 03PZ0211020	M16 03PZ0211022
NOM. FORCE	50 kN	100 kN	140 kN
MAX. OPERATING FORCE	120 % of nominal force	120 % of nominal force	120 % of nominal force
<b>DIMENSIONS</b>			
A	10.3 mm	11.3 mm	12 mm
B	10.6 mm	10.6 mm	10.6 mm
C	52 mm	57 mm	63 mm
D Ø	22.76 mm	28.6 mm	34.5 mm
E Ø	10.5 mm	13 mm	17 mm
F	27.7 mm	27.7 mm	27.7 mm
G	22.6 mm	22.6 mm	22.6 mm
H	4 mm	5 mm	6 mm
I	69 mm	69 mm	69 mm
K	1085 mm	1085 mm	1085 mm
L	20 mm	20 mm	20 mm
Da Ø <sub>-0,1</sub>	24 mm	26.5 mm	34 mm
Di Ø <sub>+0,1</sub>	10 mm	12.7 mm	16 mm
WEIGHT (CABLE INCL.)	135 g	160 g	197 g
REC. PRE-LOAD	18 kN	30 kN	45 kN
<b>SENSITIVITY</b>			
MEAS. RANGE 1	0.1145 kN/V	0.1145 kN/V	0.1145 kN/V
MEAS. RANGE 2	0.6510 kN/V	0.6510 kN/V	0.6510 kN/V

Valid for all sizes	
STORAGE TEMPERATURE	-40 °C... +60 °C
OPERATING TEMPERATURE	-10 °C... +60 °C
DEGREE OF PROTECTION	IP66/IPx7, resistant to cooling lubricants
INSULATION RESISTANCE	> 10 MOhm
NOM. DISPLACEMENT	7.5 µm at 18 kN
FUNDAMENTAL FREQUENCY	35 kHz
CROSSTALK FROM F <sub>xy</sub> TO F <sub>z</sub> FROM M <sub>xy</sub> TO M <sub>z</sub>	0.03 N/N 0.002 N/Nm
REL. LINEARITY ERROR	2 % of full scale
MATERIAL (SENSOR)	Stainless steel
MATERIAL (WASHER)	Stainless steel
SCOPE OF SUPPLY	Sensor, two washers
<b>SENSOR CABLE, 5 CORES</b>	
CABLE LENGTH, OUTER-Ø	1 m, unit with sensor, 6.5 mm
INSULATION RESISTANCE	< 1 GΩ
CABLE PROTECTION	Protective braid from steel
MIN. BENDING RADIUS	25 mm
TEMPERATURE RANGE	-25...+80 °C
<b>ACCESSORIES</b>	
CONNECTING CABLE CODE 06739797059	Cable CMD, 20M also refer to separate data sheet
WASHER CODE 04390140002 CODE 04390140003 CODE 04390140008	2 washers, stainless steel M10 M12 M16
CONFORMITY	CE, UKCA



www.marposs.com

For a full list of address locations, please consult the Marposs official website

ODN6397EN01 – Edition 04/2022 – Specifications are subject to modifications  
© Copyright 2010-2022 MARPOSS S.p.A. (Italy) – All rights reserved.

MARPOSS, ® and Marposs product names/signs mentioned or shown herein are registered trademarks or trademarks of Marposs in the United States and other countries. The rights, if any, of third parties on trademarks or registered trademarks mentioned in this publication are acknowledged to the respective owners.

Marposs has an integrated system for Company quality, environmental and safety management, with ISO 9001, ISO 14001 and OHSAS 18001 certification.



Download the latest version of this document

