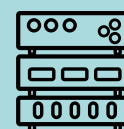




DUO Air D

DIGITAL A/E CONVERTER BOX



Interface Boxes for Data Acquisition

Duo Air D™ is an interface box for easy and economical management of a wide range of air gauges.

It can be supplied with one to four high speed digital air-to-electronics converters with fixed sensitivity nozzles, to connect Marposs as well as non-Marposs gauges.

Product **features**

Displacement
Sensors



Bore
Gauges



Forks and
Ring Gauges



Bench
Gauges



Indicators and
Electronic
Display Units



Interface
Boxes for Data
Acquisition



Software



Duo Air D is available with one to four HSD-AECONV™ high speed digital A/E converters, supplying an RS485 output signal.

Duo Air D is ideal for measurements with small tolerances, requiring high resolution. It is accurate, robust and versatile, accepting air gauges from different manufacturers.

- Max. measuring range: 100 μm
- Linearity error < 0,02 μm on the total working range
- Resolution: 0,01 μm
- Fast response time (< 100 ms)
- Very low air consumption
- Air supply pressure: 3 bar \pm 0,1
- IP67 protection degree for the converters
- Operating temperature: 3 to 65°

N.B. Air must be dry and unoled, with 5 μm filtration grade

Duo Air D is conveniently powered and managed by the Duo gauge computer to offer a compact and affordable solution for your measurement applications.



| Description | Order code |
|--|-------------|
| Duo Air D with 1 air transducer input for K type air gauges | B830DUOADK1 |
| Duo Air D with 2 air transducer input for K type air gauges | B830DUOADK0 |
| Duo Air D with 3 air transducer input for K type air gauges | B830DUOADK3 |
| Duo Air D with 4 air transducer input for K type air gauges | B830DUOADK2 |
| Connecting cable from Duo Air D to Duo (L = 0,35 m) | B6739696775 |
| Connecting cable between digital converters in the Duo Air D 2 ch (L = 0,2 m) | B4159ABDUEF |
| Duo Air D 1 ch. K type + Duo Basic (standard 0.35 m connecting cable from Duo Air D to Duo included in the supply) | BPSDUD01301 |
| Duo Air D 1 ch. K type + Duo Ethernet/IP (standard 0.35 m connecting cable from Duo Air D to Duo included in the supply) | BPSDUD01311 |
| Duo Air D 1 ch. K type + Duo Profibus (standard 0.35 m connecting cable from Duo Air D to Duo included in the supply) | BPSDUD01321 |
| Duo Air D 1 ch. K type + Duo Profinet (standard 0.35 m connecting cable from Duo Air D to Duo included in the supply) | BPSDUD01331 |
| Duo Air D 2 ch. K type + Duo Basic (std. 0.35 m conn. cable from Duo Air D to Duo and 0.2 m conn. cable between converters included in the supply) | BPSDUD01300 |
| Duo Air D 2 ch. K type + Duo Ethernet/IP (std. 0.35 m conn. cable from Duo Air D to Duo and 0.2 m conn. cable between converters included in the supply) | BPSDUD01310 |
| Duo Air D 2 ch. K type + Duo Profibus (std. 0.35 m conn. cable from Duo Air D to Duo and 0.2 m conn. cable between converters included in the supply) | BPSDUD01320 |
| Duo Air D 2 ch. K type + Duo Profinet (std. 0.35 m conn. cable from Duo Air D to Duo and 0.2 m conn. cable between converters included in the supply) | BPSDUD01330 |
| Duo Air D 3 ch. K type + Duo Basic (std. 0.35 m conn. cable from Duo Air D to Duo and 2 x 0.2 m conn. cable between converters included in the supply) | BPSDUD01303 |
| Duo Air D 3 ch. K type + Duo Ethernet/IP (std. 0.35 m conn. cable from Duo Air D to Duo and 2 x 0.2 m conn. cable between converters included in the supply) | BPSDUD01313 |
| Duo Air D 3 ch. K type + Duo Profibus (std. 0.35 m conn. cable from Duo Air D to Duo and 2 x 0.2 m conn. cable between converters included in the supply) | BPSDUD01323 |
| Duo Air D 3 ch. K type + Duo Profinet (std. 0.35 m conn. cable from Duo Air D to Duo and 2 x 0.2 m conn. cable between converters included in the supply) | BPSDUD01333 |
| Duo Air D 4 ch. K type + Duo Basic (std. 0.35 m conn. cable from Duo Air D to Duo and 3 x 0.2 m conn. cable between converters included in the supply) | BPSDUD01302 |
| Duo Air D 4 ch. K type + Duo Ethernet/IP (std. 0.35 m conn. cable from Duo Air D to Duo and 3 x 0.2 m conn. cable between converters included in the supply) | BPSDUD01312 |
| Duo Air D 4 ch. K type + Duo Profibus (std. 0.35 m conn. cable from Duo Air D to Duo and 3 x 0.2 m conn. cable between converters included in the supply) | BPSDUD01322 |
| Duo Air D 4 ch. K type + Duo Profinet (std. 0.35 m conn. cable from Duo Air D to Duo and 3 x 0.2 m conn. cable between converters included in the supply) | BPSDUD01332 |

Displacement Sensors



Bore Gauges



Forks and Ring Gauges



Bench Gauges



Indicators and Electronic Display Units



Interface Boxes for Data Acquisition



Software



Application examples

Displacement
Sensors



Bore
Gauges



Forks and
Ring Gauges



Bench
Gauges



Indicators and
Electronic
Display Units



Interface
Boxes for Data
Acquisition



Software

