

C-ENERGY

ENERGY DATA MANAGEMENT FOR MACHINES AND SYSTEMS

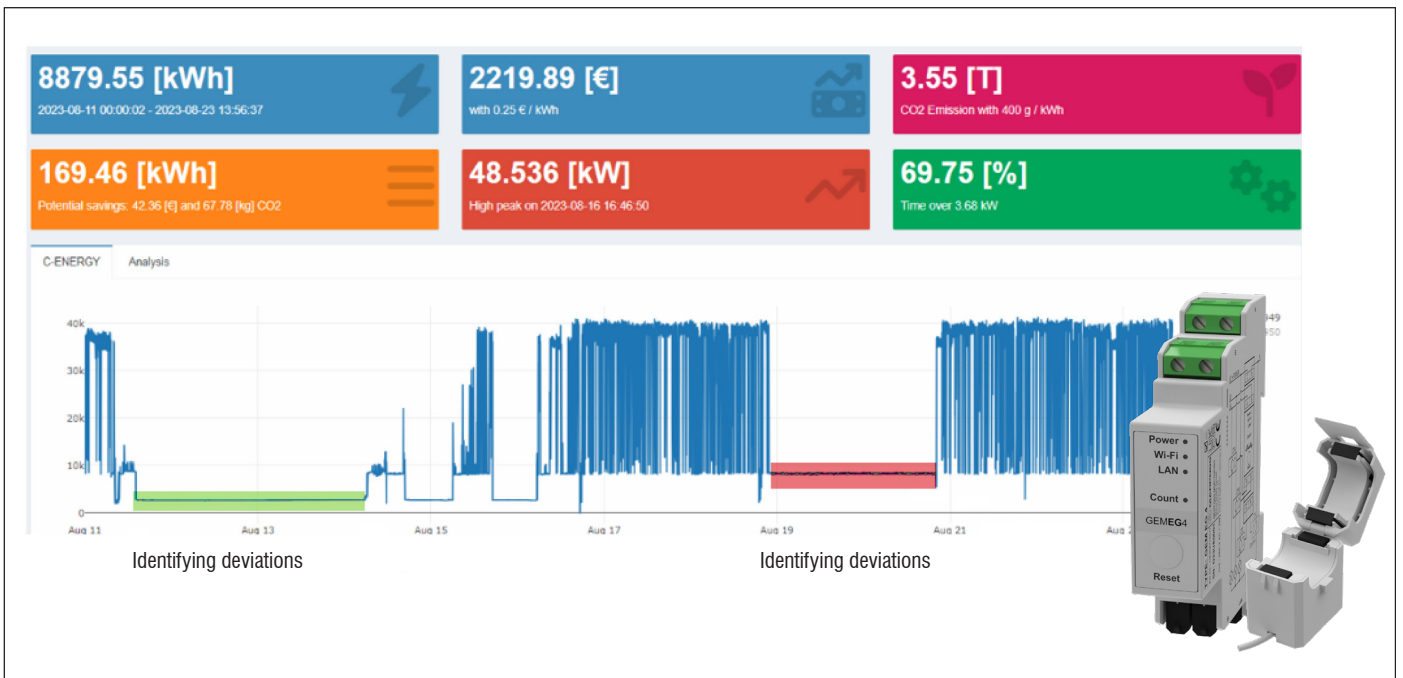


Illustration similar. The red and green markings in the graphic are for illustration purposes only and are not part of the software.

Identify energy consumption and uncover optimization potential!

Customized energy management can result in significant cost savings. These optimizations are made by using suitable measurement technology and matching software to evaluate the collected information.

Based on the measured energy consumption, the software clearly shows, for example, energy costs, CO₂ emissions and consumption peaks and creates the basis for further analyses.

The **C-ENERGY** system for the management of energy data combines both hardware and software and thus not only offers comprehensive recording of energy consumption and peak consumption of machines and plants, but also provides a holistic overview. In combination with other monitoring data, this results in further potential for savings.

The **C-ENERGY** software module is part of the **C-THRU4.0-** family, the ARTIS analysis software for the Smart Factory.

Components of the energy management system are:

- Software **C-ENERGY**
- Energy meter modules GEMEG1 or GEMEG4
- 3 Hall sensors

Analysis values per time

- Energy consumption in kWh
- Energy costs in Euro
- CO₂ equivalent in kg
- Max. power in kW
- Time over standby in %
- Potential savings in Euro (estimation)

The advantages of implementing **C-ENERGY** are:

- Energy data storage and visualization
- Quick identification of savings potentials
- Support for certification according to ISO 50001
- Less operating costs
- Combined system, consisting of a hardware and a software component
- Easy integration and retrofitting
- Intuitive software operation
- Web-based, remote access, scalable and easy to update

GEMEG ENERGY MEASUREMENT KITS

<p>GEMEG1 ENERGY MEASUREMENT KIT for units up to 120 A MARPOSS CODE: OP1QMT12425 Scope of supply:</p> <ul style="list-style-type: none"> • GEMEG1 ENERGY METER MODULE • 3 HALL SENSORS 120 A • SOFTWARE C-ENERGY 	<p>GEMEG4 ENERGY MEASUREMENT KIT for units up to 400 A MARPOSS CODE: OP1QMT12426 Scope of supply:</p> <ul style="list-style-type: none"> • GEMEG4 ENERGY METER MODULE • 3 HALL-SENSORS 400 A • SOFTWARE C-ENERGY 	<p>When installing C-ENERGY, the database management system C-THRU4.0 is included in the installation unless it is already in place.</p> <p>For further information on the requirements for the operation of C-THRU4.0, please refer to the corresponding data sheet.</p>
---	---	--

	ENERGY METER MODULE GEMEG1	ENERGY METER MODULE GEMEG4
MODUL		
CONNECTION		
VOLTAGE SUPPLY	AC: 110 - 240 V, 50/60 Hz / DC: N/A	
NEUTRAL CONDUCTOR	required	
FUNCTIONS		
OVER TEMPERATURE PROTECTION	available	
AMBIENT TEMPERATURE	- 20 to + 40 °C	
HUMIDITY	30 % to 70 % RH	
VOLTMETER (RMS for each phase)	100 - 260 V	
ACCURACY (Volt meter)	±1 %	
MEASURING RANGE	0 - 120 A	0 - 400 A
ACCURACY	±1 % (2 - 120 A), ±2 % (1 - 2 A), ±5 % (0 - 1 A)	±1 % (5 - 400 A), ±2 % (0 - 5 A)
POWER- AND ENERGY COUNTER	Active and apparent power; active and apparent energy, power factor; basic active and basic reactive energy	
NO LOAD THRESHOLD	30 VA per phase	
OWN CONSUMPTION	< 3 W	
CONNECTIVITY		
WLAN PROTOCOL	802.11 b/g/n, WLAN can be deactivated	
BLUETOOTH-PROTOCOL	4.2, Bluetooth can be deactivated	
FREQUENCY		
RF-BAND and MAX RF POWER	2.4 MHz, <20 dBm	
PROPERTIES		
CURRENT CONVERTERS	3 x CT120 included in scope of supply	3 x CT400 included in scope of supply
DIMENSIONS	94 x 19 x 69 ±0.5 mm	
WEIGHT	62 ±1 g	
MOUNTING	DIN rail	
WIRE CROSS SECTION	0.5 bis 2.5 mm ² / 20 to 14 AWG (solid, stranded and wire-end sleeves)	
HOUSING	Plastic	
HALL SENSORS		
INSTALLATION	folding assembly	
WEIGHT (cable included)	0.064 kg	0.291 kg
MAX. LENGTH CONNECTING CABLE	650 mm	

CONFORMITY	CE, UKCA
-------------------	----------



www.marposs.com

For a full list of address locations, please consult the Marposs official website

ODN6410EN03 – Edition 10/2023 – Specifications are subject to modifications
© Copyright 2010-2023 MARPOSS S.p.A. (Italy) – All rights reserved.

MARPOSS,  and Marposs product names/signs mentioned or shown herein are registered trademarks or trademarks of Marposs in the United States and other countries. The rights, if any, of third parties on trademarks or registered trademarks mentioned in this publication are acknowledged to the respective owners.

Marposs has an integrated system for Company quality, environmental and safety management, with ISO 9001, ISO 14001 and OHSAS 18001 certification.



www.artis.de

