



E9066

LINE

INDUSTRIAL GAUGING COMPUTERS



Indicators and electronic display units

The **E9066™** line of Industrial Computers is designed from the ground up to withstand harsh working environments and day-to-day operational abuse. Fanless, maintenance-free industrial PCs housed in factory-tested enclosures ensure the durability and reliability needed to meet any factory requirement. **E9066** industrial computers are seamlessly combined with **GagePod™** Data Acquisition modules and the **Quick SPC™** software suite for gauging applications, Process & Quality control, Factory Automation and real-time SPC.

THE PRODUCT LINE

Displacement Sensors



Bore Gauges Line



Forks and Ring Gauges



Bench Gauges



Indicators and Electronic Display Units



Interface Boxes for Data Acquisition



Software



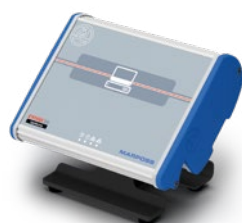
E9066T

True-flat touchscreen (5-wire resistive or multi-touch capacitive);
Display: 15" to 19" (4:3); 15.6" to 24" (16:9); Blind-panel (no display);
Fanless and diskless;
Panel-mount, bench-mount or swing-arm; wall & DIN-rail mount: pedestal;
6 USB ports;
4 Ethernet Gigabit ports;
1 RS232 port;
Industrial Fieldbus communication modules (e.g. Profibus®, Profinet®, EtherNet/IP™);
Integrated, on-board UPS with an industrial-grade battery pack;
Additional Ethernet, USB/Serial ports and PCI/PCIe expansion slots.



E9066E

True-flat 15.6" touchscreen;
Fanless and diskless;
Panel-mount, bench-mount or swing-arm;
5 USB ports;
2 Ethernet Gigabit ports;
1 RS232 port;
Industrial Fieldbus communication modules (e.g. Profibus®, Profinet®, EtherNet/IP™);
Integrated, on-board UPS with an industrial-grade battery pack.



E9066E^{bb}

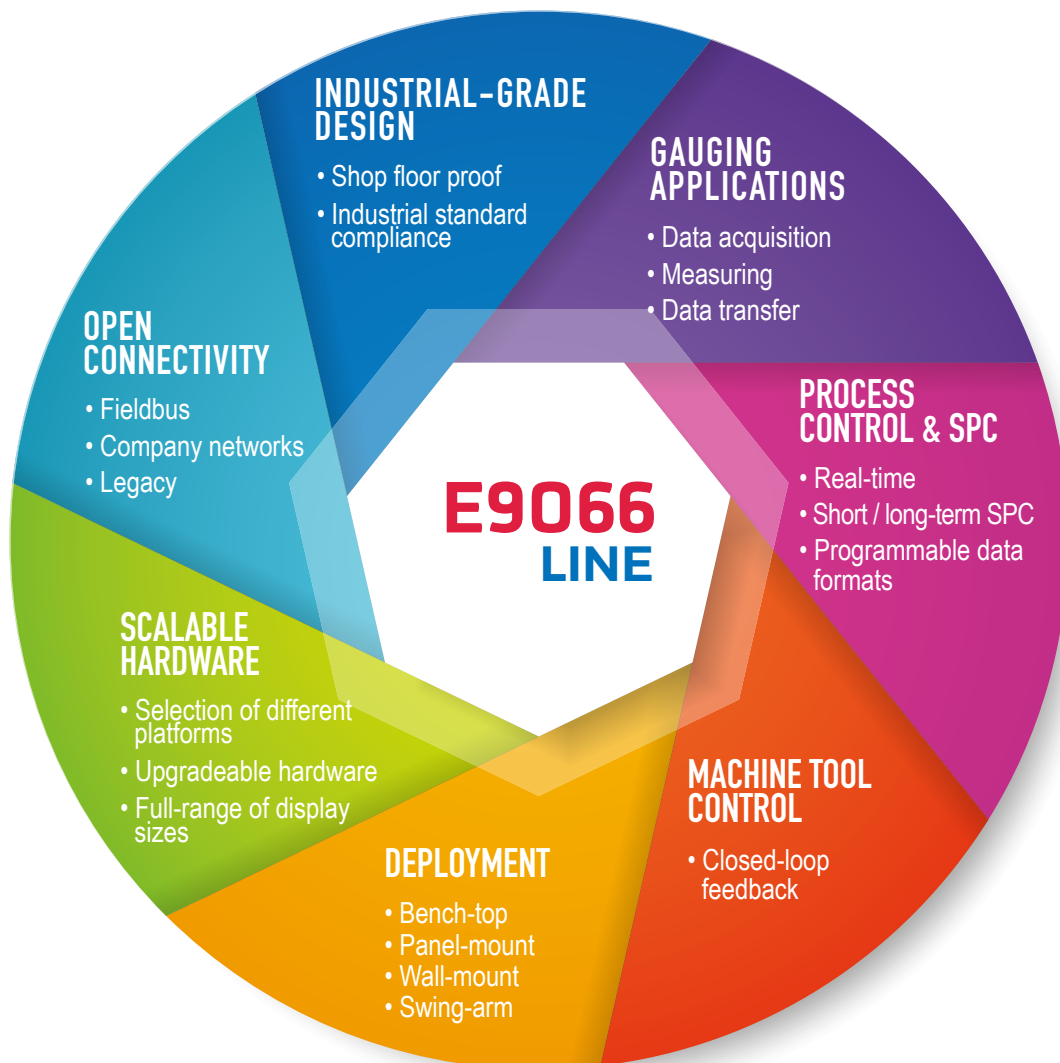
'Barebone' PC-in-a-box in a sealed enclosure, without display;
Connectable to any DVI or VGA-compatible screen;
Fanless and diskless;
6 USB ports;
2 Ethernet Gigabit ports;
1 RS232 port;
Table support and power supply.

Product **features** and **benefits**

E9066T™ : our top-of-the-line Industrial Computer, designed for mission-critical gauging applications, representing a truly innovative family of modular and reliable industrial computers for data collection, Industrial Control and Production/Factory Automation.

E9066E™ : provides an efficient and cost-effective solution for Data Collection, Industrial Control and Production/Factory Automation. It is a diskless and totally fanless computer system, in a sealed, compact and shop-floor proof enclosure

E9066E-bb™ : a highly compact solution, well suited for space-constrained applications. This blind industrial computer is a stripped-down 'barebone' version of the E9066E, offering the flexibility to connect a display of any size.



Displacement
Sensors



Bore Gauges
Line



Forks and
Ring Gauges



Bench
Gauges



Indicators and
Electronic
Display Units



Interface
Boxes for Data
Acquisition



Software



Displacement Sensors



Bore Gauges Line



Forks and Ring Gauges



Bench Gauges



Indicators and Electronic Display Units



Interface Boxes for Data Acquisition



Software



INDUSTRIAL-GRADE DESIGN

- withstands the abuse of severe shop floor environments;
- compliance to international industrial standards for EMC, safety and noise immunity.

GAUGING APPLICATIONS

- from simple, manual gauging up to complex automatic gauging applications;
- real-time data acquisition and measuring applications from Easy Box™ GagePod™ and third-party data acquisition systems;
- data formats: standard (txt; csv...), industry (e.g. qs-stat®) and customer-specific.

INDUSTRIAL PROCESS CONTROL & SPC

- real-time;
- short / long-term SPC (Statistical Process Control);
- programmable data formats and data transfer strategies (user-defineable).

MACHINE TOOL CONTROL

- closed-loop machine tool feedback.

DEPLOYMENT

- bench-top / panel-mount / wall-mount / swing-arm.

SCALABLE HARDWARE

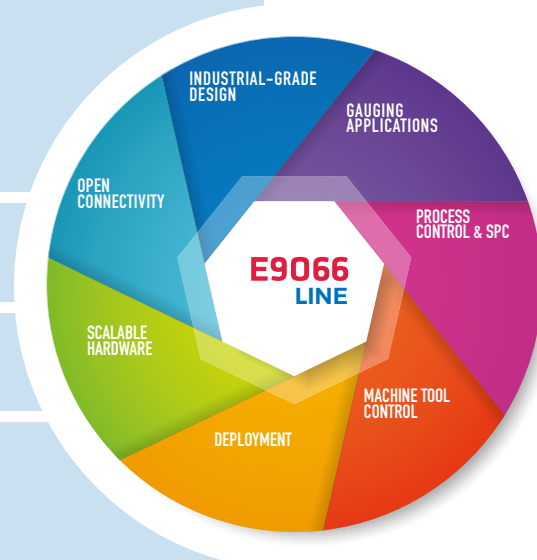
- selection of different platforms: INTEL® edge-computing IoT processors and high-end Core™ series;
- upgradeable hardware;
- full-range of display sizes.

OPEN CONNECTIVITY

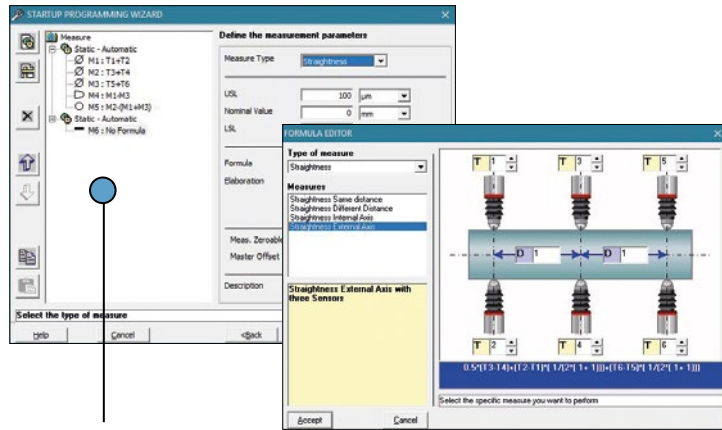
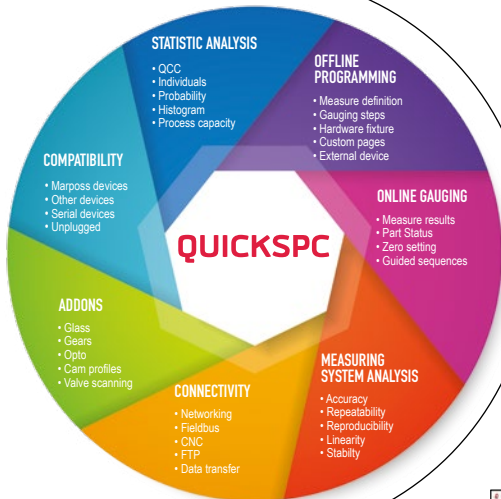
- fieldbus (e.g. Profinet®, EtherNet/IP™ Profibus®...);
- company networks & Industry 4.0 protocols (e.g. OPC-UA...);
- customer-specific protocols.

RELIABILITY AND CONSISTENCY

- complete and comprehensive "measurement chain" of single-source components and applications from Marposs;
- consistent, scalable solutions from a single partner that ensures continuity of supply over time, and long-term technical support;
- easy-to-use technologies for all application needs.

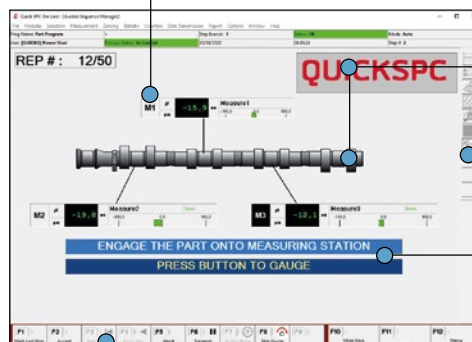


QUICK SPC Software Suite



WIZARDS

- Simple wizard-driven interface for easy data programming
- Context sensitive measurements definition and formula creation
- Integrated graphic tool editor to create operator prompts and instructions



ON LINE

- Customizable display
- Clear and readable information
- Measurement bargraph, numeric and color code displays

MULTIMEDIA

Static and dynamic files (picture, drawings, videos, etc.)

HOT TABS

- Freely programmable
- Direct selection view
- Mouse free

OPERATOR PROMPTS

- Instructions
- Data acquisition
- Capability studies (gage, machine, process)

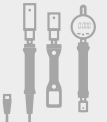
FUNCTION KEYS

- Customizable
- Pictorial helps
- Application dependent
- Mouse free

Displacement
Sensors



Bore Gauges
Line



Forks and
Ring Gauges



Bench
Gauges



Indicators and
Electronic
Display Units



Interface
Boxes for Data
Acquisition



Software



Quick SPC Measurement & SPC is a suite of software modules designed to meet any need, from simple measurement acquisition to complex gauging applications.

Framed by a simple, wizard-driven, common user interface, it is possible to complement the base product with software Add-ons specifically designed for specialized industries.

Combined with any **E9066** Industrial Computer and **GagePod™** Distributed Data Acquisition module, **Quick SPC** provides a complete and comprehensive 'measuring chain' composed of single sourced components and applications from Marposs, ensuring reliability and consistency along the supply chain.

TECHNICAL SPECIFICATIONS

Main hardware characteristics			
	E9066E-bb (barebone)	E9066E	E9066T
Technology			
Motherboard	All-in-one motherboard	All-in-one motherboard	All-in-one motherboard
Processor	INTEL® J1900 Quad Core 2.0GHz - 64 bit	INTEL® J1900 Quad Core 2.0GHz - 64 bit	INTEL® Core™- i7 / i5 / i3 (64bit)
RAM (min - max)	2GB - 8GB	2GB - 8GB	4GB - 32GB
SSD	128GB (min)	128GB (min)	128GB (min)
Operating System	Windows 10 IoT Enterprise	Windows 10 IoT Enterprise	Windows 10 IoT Enterprise
LCD Type & Size	n.a.	15.6 TFT	15/17/19/15.6/18.5/21.5/24 TFT
Resolution	n.a.	HD (1366x768) Full HD (1920x1080)	from XGA (1024x768) to Full HD (1920x1080)
Aspect ratio / Contrast	n.a.	16:9 / 900:1	4:3 / 16:9 - 700:1 / 1000:1
Brightness & Backlight	n.a.	400 cd/m² (400 nit) - LED backlight	450 - 350 cd/m² - LED backlight
Screen / touch	n.a.	True-flat, impact resistant & anti-glare 5 wire analog-resistive	True-flat. Impact resistant & anti-glare 5-wire resistive / multitouch capacitive
Protection	IP54 on front	IP65 on front	IP66 on front
Power supply	nominal 24Vdc (18Vdc ÷ 36Vdc)	nominal 24Vdc (18Vdc ÷ 36Vdc)	nominal 24Vdc (18Vdc ÷ 36Vdc)
Connectivity			
Ethernet ports	2 x 1Gbps (RJ45)	2 x 1Gbps (RJ45)	4 x 1Gbps (RJ45)
USB ports	6 x USB 2.0	2 x 2.0 (side); 2 x 2.0 (rear); 1 x 3.0 (rear)	1xUSB 2.0 (front); 2xUSB 3.0 (rear) 3xUSB 2.0 (rear)
Serial port	1 x RS232C (DBSUB9)	1 x RS232C (DBSUB9)	1 x RS232C (DBSUB9)
Compact Flash	n.a.	1 x Type I. SATA III	1 x Type I. SATA III
PS/2	n.a.	n.a.	1 (mouse/keyboard)
Video Out	DVI-I (DVI-D + VGA)	DVI-I (DVI-D + VGA)	DVI-D
Video out resolution	1920 x 1200 (24bit per pixel)	1920 x 1200 (24bit per pixel)	1920 x 1200 (24bit per pixel)
Options			
Bus expansion	n.a.	2 x miniPCI	2 x miniPCI
Fieldbus	n.a.	miniPCI. In alternative to 3rd Ethernet LAN	miniPCI
Ethernet ports (additional)	n.a.	1 x 1Gbps (RJ45). In alternative to Fieldbus	4 x Gbps (RJ45)
Serial port (additional)	n.a.	n.a.	1 x RS-232/422/485 (DBSUB15)
8 IN / 8 OUT	n.a.	miniPCI card	miniPCI card
UPS	n.a.	integrated on-board	integrated on-board
Uninterruptable Power Supply	n.a.	Pb, 12V/13A max, 2500mA/h	Pb, 12V/13A max, 2500mA/h
UPS battery pack	n.a.	Pb, 12V/13A max, 2500mA/h	Pb, 12V/13A max, 2500mA/h
Power supply unit	24Vdc AC/DC (option)	24Vdc AC/DC (option)	24Vdc AC/DC (option)
Mounting solutions			
Panel mount	n.a.	standard	standard
Benchmount	stand (option)	tilting stand	IP54 cabinet
Swing-arm	n.a.	VESA	on IP54 cabinet (RITTAL CP-xx)
Wall mount / DIN-rail	standard	n.a.	E9066T-BB PC box (no display)
Weight	2 Kg	9.5 Kg (PC + housing) 4 Kg (stand and base) 1.5 Kg (UPS battery pack)	6 Kg (PC) 12 Kg (9 kg cabinet + 3Kg stand) 1.5 Kg (UPS battery pack)
Environmental			
Relative humidity	from 5 to 80 % (non condensing)	from 5 to 80 % (non condensing)	from 5 to 80 % (non condensing)
Temperature (operating)	from 0 to 50 °C	from 0 to 50 °C	from 0 to 50 °C (SSD) / from 5 to 45°C (HDD standard)
Temperature (non operating)	from - 20 to 60 °C (-4 to 140 °F)	from - 20 to 60 °C (-4 to 140 °F)	from - 20 ÷ 60 °C (-4 to 140 °F)

Displacement
Sensors



Bore Gauges
Line



Forks and
Ring Gauges



Bench
Gauges



Indicators and
Electronic
Display Units



Interface
Boxes for Data
Acquisition



Software



Product **portfolio**



Each **E9066** industrial computer running **Quick SPC** software can be easily connected to **GagePod**, **EasyBox** and other data acquisition and signal conditioning modules to provide complete, turnkey measurement applications for any need.

Displacement
Sensors



Bore Gauges
Line



Forks and
Ring Gauges



Bench
Gauges



Indicators and
Electronic
Display Units



Interface
Boxes for Data
Acquisition



Software



Application examples

Displacement
Sensors



Bore Gauges
Line



Forks and
Ring Gauges



Bench
Gauges



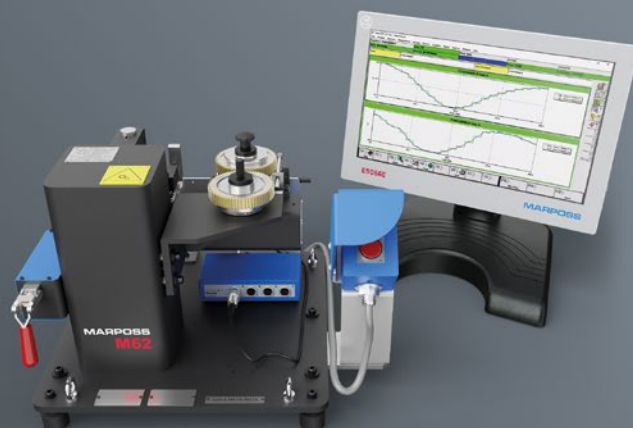
Indicators and
Electronic
Display Units



Interface
Boxes for Data
Acquisition



Software

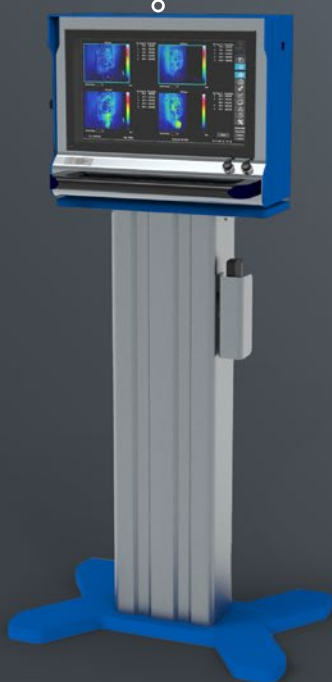


E9066E & Quick SPC

Gear Inspection

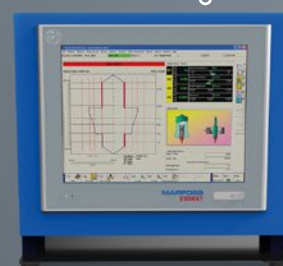
E9066T TTV

Thermographic process
Control for die casting



E9066T & Quick SPC

Scanning inspection to
check matching parts



E9066E-bb & GAGEPOD

Manual gauging in custom
housing

