



DUO

THE PREMIUM AFFORDABLE DISPLAY UNIT



Indicators and electronic display units

Duo™ is a premium 4.3" electronic display unit allowing to perform simple measurement applications intuitively and rapidly.
As small as a smartphone, Duo is a powerful and ultra compact gauge computer.

Designed in response to customer needs, it is a "something in-between" display unit that provides premium features at an affordable price.

THE PRODUCT LINE

Displacement Sensors



Bore Gauges



Forks and Ring Gauges



Bench Gauges



Indicators and Electronic Display Units



Interface Boxes for Data Acquisition



Software



DUO Basic



Optional
Fieldbus
modules



DUO Bus



Duo is well-suited for simple manual applications when only a few measurements are needed on the shop floor at any given time. Featuring two sensor input channels, it can simultaneously display up to four measurements. The system is easy to configure and provides clear visualization of measurement status.

Duo is designed to work with Marposs LVDT and HBT manual gauges, such as bore gauges M1 and M1 Star, snap gauges M3 Star, ring gauges M4 and M4 Star, and RedCrown/RedCrown2 displacement sensors with a measuring range up to ± 10 mm. It is the perfect ensemble with Duo Air™, an analog A/E converter box that provides one or two LVDT output signals, offering a premium solution for air measuring devices. It can also connect HBT sensors from Tesa.

Data collected can be stored internally in the Micro SD memory providing powerful memory capacity, exported through the USB port, the RS232 port or the optional Fieldbus port.

Duo software guarantees a friendly and easy to use operator interface. The true flat touch-screen allows to program and acquire measurements without any additional input/command device. A data trigger can be made also with the external signal of a footswitch or with a data request from the host PC, through a serial or fieldbus protocol.

Easier cycle management through 2 IN (Start/Stop, zeroing), 2 OUT (part good or scrap) and one separate input for a footswitch.

Designed also for portable use, it can be powered by an external battery (at least 16000 mAh to guarantee one working shift).

Trigger for footswitch

Sensor input 2

Sensor input 1

RS232/485 Output

Power supply input

USB port for data export

24VDC Optocoupled I/O
(2IN - 2OUT)



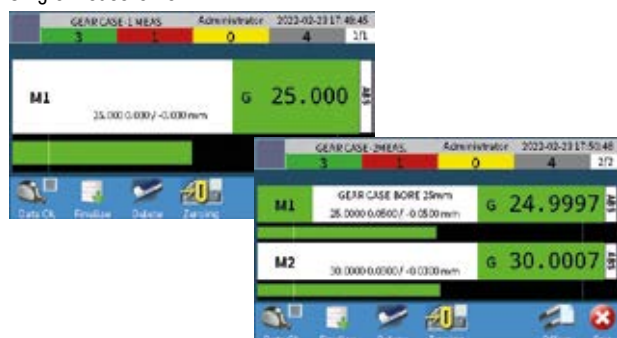
TECHNICAL SPECIFICATIONS

Main hardware characteristics

Case	Robust industrial Aluminum case
Protection	IP54 on front panel; IP40 on rear panel
Touch screen	Capacitive, true flat
Storage media	Internal 4 GB Micro SD memory or removable USB memory device
LCD display tape	4.3" color TFT
Ethernet/Fieldbus	Available types are Ethernet/IP, Profibus, Profinet
Usb ports	1 x type B (only for power supply) + 1 x type A
Serial port	1 x RS232C + 1 x RS485
Bench-top support	Reclinable
Power supply	5V 1.4A
Dimension	130 x 95 x 50 mm (5.12" x 3.74" x 1.97")
Weight	1 kg
Operating temperature	5 to 45 °C (41 to 113 °F)
Storage temperature	-20 to 70 °C (-4 to 158 °F)

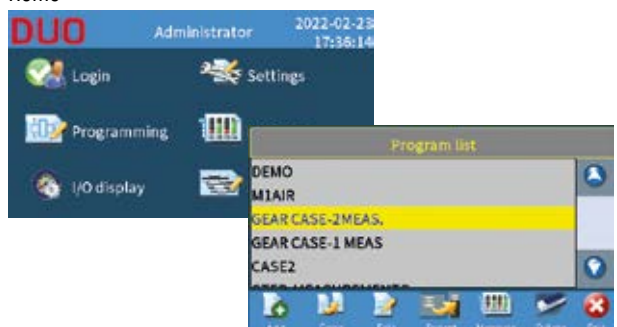
Product features

Single measurement



Multiple measurement

Home



Part programs list

- Measurement capability up to 4 characteristics.
- Part counters.
- Dynamic acquisitions [Max, min, Range, Range/2, Average].
- Multiple zero setting modes (Zeroing / Sensitivity adj. / Zeroing & Sens. adj.).
- Multiple measurement display with numeric and graphical layout.
- Acquisition command through external signal (footswitch) or touch-screen.
- Measurement data transmission through Fieldbus (option), serial protocols or serial keyboard emulation.
- Remote data storage and export through removable USB memory device.
- Data storage format: .CSV (Microsoft® Excel Comma Separated Values), .DFQ (K-fields).
- Multi-language support for: English, Italian, German, French, Spanish, Portuguese, Swedish, Romanian, Dutch, Polish, Magyar, Czech, Russian, Taiwanese, Turkish, Japanese, Chinese, Korean.
- Programming interface designed to be used with touchscreen.
- Configuration Backup-Restore-Update by USB memory devices.
- Password protected multi-user management.

Displacement Sensors



Bore Gauges



Forks and Ring Gauges



Bench Gauges



Indicators and Electronic Display Units



Interface Boxes for Data Acquisition



Software



HOW TO ORDER

Description	Order code
DUO Basic for LVDT/HBT/Tesa HBT sensors	B830DUOD001
DUO Bus for LVDT/HBT/Tesa HBT sensors, with Profibus module	B830DUOD043
DUO Bus for LVDT/HBT/Tesa HBT sensors, with Profinet module	B830DUOD044
DUO Bus for LVDT/HBT/Tesa HBT sensors, with Ethernet/IP module	B830DUOD045
Footswitch with 2 m cable for data triggering function	B6131000110

Application examples

Displacement
Sensors



Bore
Gauges



Forks and
Ring Gauges



Bench
Gauges



Indicators and
Electronic
Display Units



Interface
Boxes for Data
Acquisition



Software

