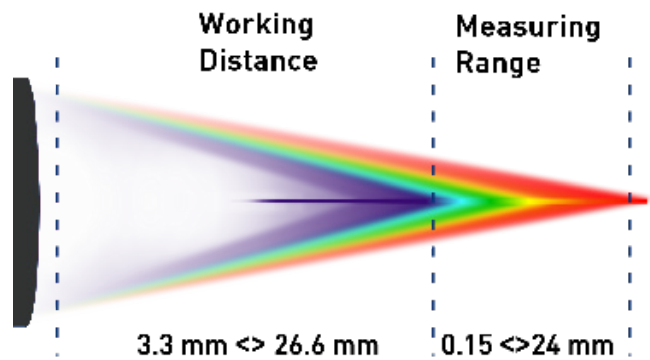
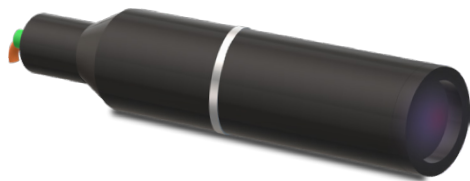


CL-MG SERIES

NEW
2020

MARPOSS
STIL

Chromatic Confocal Controller



- Universal diameter (27mm)
- Axial resolution (from nanometer to micrometer scales)
- A few hundred grams for easy OEM integration
- Measurement of distances at the submicrometer scale
- Discretization of transparent single or multi-layer thicknesses
- Suitable for measurement through a protective window or transparent walls

Versatile



Adapted to any
type of surface

Industrial



Works in any
environment

Approved



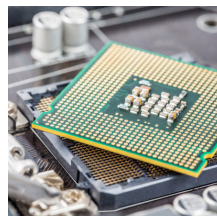
+ 15K sensor
heads sold
worldwide

DESIGNED FOR

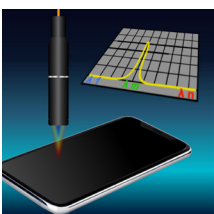
Mechanics



Semiconductors



Metrology

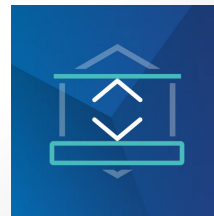


Glass



PERFECT FOR

Distance



Roughness



Thickness



Shape



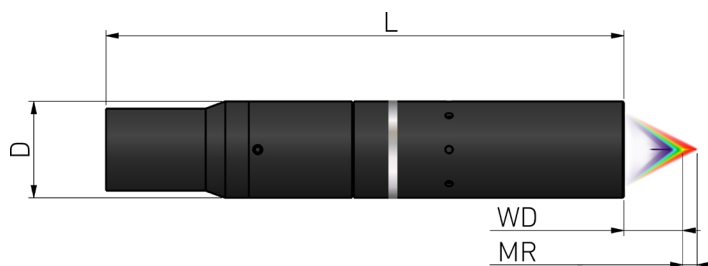
CL-MG SERIES

NEW
2020

MARPOSS
STIL

Chromatic Confocal Controller

DIMENSIONAL DRAWING*



SPECIFICATIONS*

Product	Unit	CL1-MG210	CL2-MG140	CL3-MG70	CL4-MG35	CL5-MG35	CL6-MG20
Order code		03PS0112101	03PS0121402	03PS0137002	03PS0143501	03PS0153501	03PS0162001
Measuring Range	mm	0.15	0.4	1.4****	4	12	24
Working Distance	mm	3.3	10.8	12.2	16.5	26.6	20
Numerical Aperture		0.71	0.46	0.41	0.32	0.2	0.12
Max. slope angle	°	± 42	± 28	± 25	± 21	± 14	± 8.5
Axial		Standard					
90° folded model		Option					
Max. linearity error**	µm	± 0.025	± 0.05	± 0.13	± 0.3	± 0.75	± 1.2
Static noise**	nm	7	20	60	110	370	800
Axial resolution **	µm	0.042	0.1	0.36	0.66	2.22	4.8
Lateral resolution	µm	1.1	1.8	4.5	4.6	11	18
Spot size	µm	2.7	4	11.9	12.3	24.3	43
Photometric efficiency		5	8	63	31	42	60
Min. measurable thickness***	µm	7.5	14	40	110	350	725
Length	mm	243.8	208.9	176.1	145.4	145.4	155.6
Diameter	mm	27	27	27	27	27	27
Weight	g	268	190	214	155	175	180

** With CCS electronics (PRIMA & OPTIMA+)

*** Typical value considering a layer of glass, i.e. considering a refractive index n=1.51

**** 1.3 with CCS Optima +

ASSOCIATED WITH

OPTICAL FIBER

- Standard cladding
- Stainless steel cladding
- Armored fiber

CONTROLLER



- ZENITH
- PRIMA, - OPTIMA +, PRIMA 2
- LIGHTMASTER
- STIL-DUO

www.stil-sensors.com

info@stil-sensors.com

+33 (0)4 42 39 66 51

Some of the items supplied by STIL S.A.S., or parts of them, may be subject to export control if exported outside the European Union, or may be subject to restrictive measures adopted by the competent national, supranational or international authorities. Buyer of the items delivered by STIL S.A.S. shall comply with all applicable export control and sanctions laws and regulations.

* Specifications are subject to modifications

CR27-000-0822