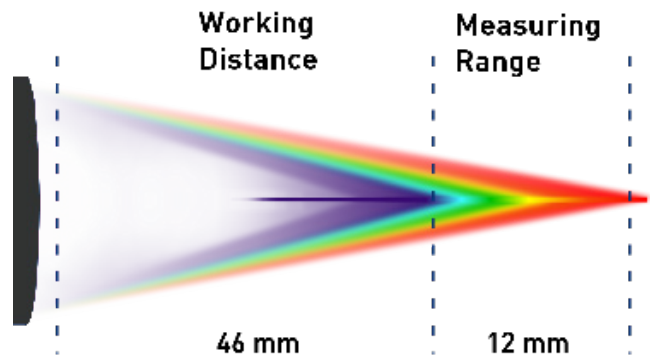
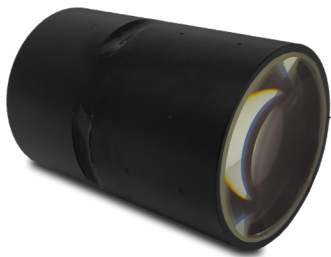


OP 12000

LONG
WORKING
DISTANCE

MARPOSS STIL

Chromatic Confocal Controller



OP 12 000 offers outstanding performance:

- Long working distance
- Optimal photometric coefficients
- Multiple applications (roughness, thickness, autofocus and more)

Slope Angle



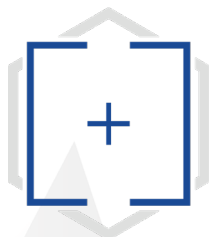
$\pm 14^\circ$

Accuracy



$\pm 0.6 \mu\text{m}$

Resolution



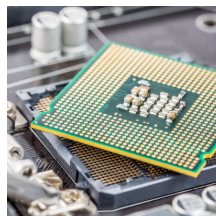
$2.3 \mu\text{m}$

DESIGNED FOR

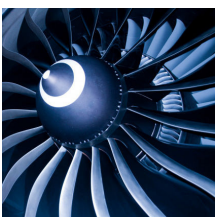
Glass



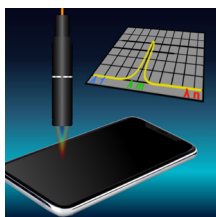
Semiconductors



Aerospace

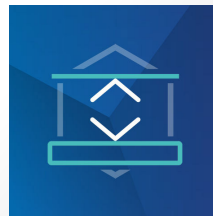


Metrology



PERFECT FOR

Distance



Dimension



Thickness



Shape



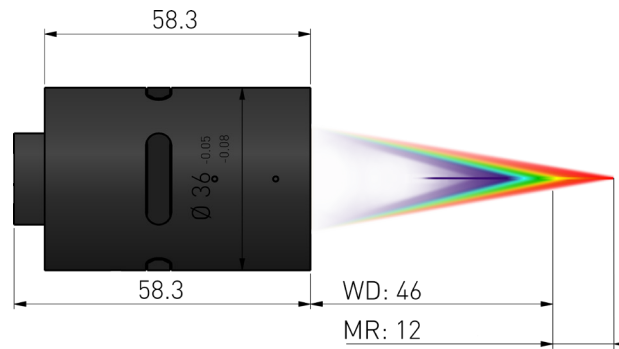
OP 12000

LONG
WORKING
DISTANCE

MARPOSS STIL

Chromatic Confocal Controller

DIMENSIONAL DRAWING*



Nota: All dimensions are in mm

SPECIFICATIONS*

| Product | Unit | OP 12000 |
|------------------------------|------|-------------|
| Order code | | 03PS1400010 |
| Measuring Range | mm | 12 |
| Working Distance | mm | 46 |
| Numerical aperture | | 0.25 |
| Max. slope angle | ° | ± 14 |
| Axial model | | Axial |
| Max. linearity error** | µm | ± 0.6 |
| Static noise** | nm | 380 |
| Axial resolution** | µm | 2.28 |
| Lateral resolution | µm | 14 |
| Spot size | µm | 32.5 |
| Photometric efficiency | | 100 |
| Min. measurable thickness*** | µm | 550 |
| Length | mm | 58.3 |
| Diameter | mm | 36 |
| Weight | g | 130 |

** With CCS electronics (PRIMA & OPTIMA+)

*** Typical value considering a layer of glass, i.e. considering a refractive index n=1.51

ASSOCIATED WITH

OPTICAL FIBER

- Standard cladding
- Stainless steel cladding
- Armored fiber

CONTROLLER



- ZENITH
- PRIMA, PRIMA +, OPTIMA +
- LIGHTMASTER

www.stil-sensors.com

info@stil-sensors.com

+33 (0)4 42 39 66 51

Some of the items supplied by STIL S.A.S., or parts of them, may be subject to export control if exported outside the European Union, or may be subject to restrictive measures adopted by the competent national, supranational or international authorities. Buyer of the items delivered by STIL S.A.S. shall comply with all applicable export control and sanctions laws and regulations.

* Specifications are subject to modifications

PPS001-100-N2-0822