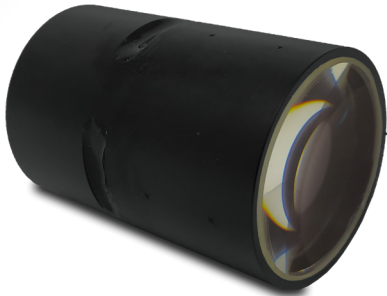
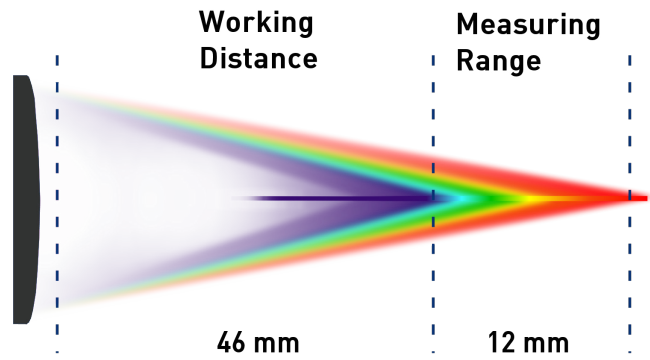


## Chromatic Confocal Sensor Head



The new OP 12000 sensor head is the best choice for long distance measurement in manufacturing processes. The working distance of 46 mm allows the sensor head to be placed far from the target object. This gives a significant advantage in terms of mechanical but also thermal protection, without any compromise on precision. The 12 mm measurement range provides a good balance between measurement flexibility and resolution.



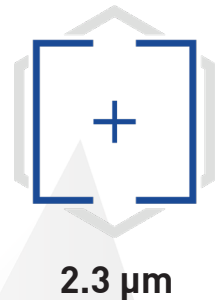
### Slope Angle



### Accuracy



### Resolution

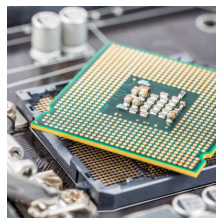


## DESIGNED FOR

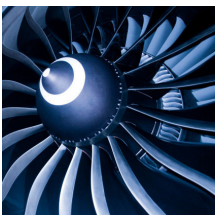
### Glass



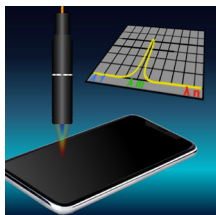
### Semiconductors



### Aerospace

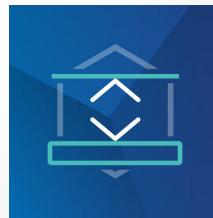


### Metrology



## PERFECT FOR

### Distance



### Dimension



### Thickness

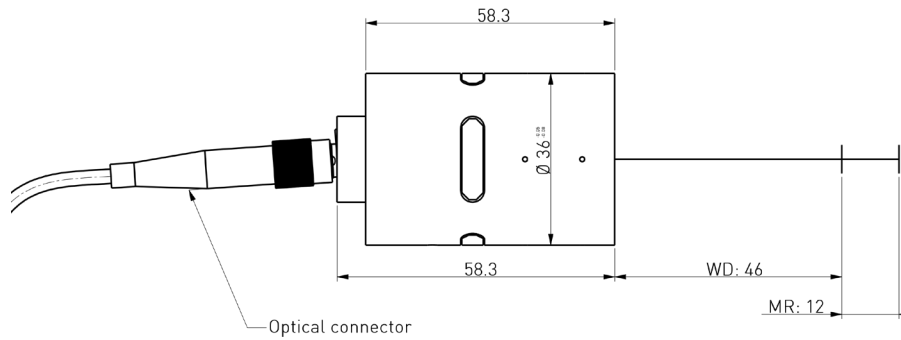


### Shape



Chromatic Confocal Sensor Head

DIMENSIONAL DRAWING\*



Nota: All dimensions are in mm

SPECIFICATIONS\*

Product		OP 12 000
Order code		03PS1400010
Measuring Range	mm	12
Working Distance	mm	46
Numerical aperture		0.25
Max. slope angle	°	± 14
Axial or folded model		Axial
Max. linearity error**	µm	± 0.6
Static noise**	nm	380
Axial resolution**	µm	2.28
Lateral resolution	µm	14
Spot size	µm	32.5
Photometric efficiency		100
Min. measurable thickness	µm	550
Length	mm	58.3
Diameter	mm	36
Weight	g	130

\*\* With CCS electronics (PRIMA & OPTIMA+)

ASSOCIATED WITH

OPTICAL FIBER

- Standard cladding
- Stainless steel cladding
- Armored fiber

CONTROLLER



- PRIMA, PRIMA +, OPTIMA +
- MULTIMA 12
- LIGHTMASTER