



Delta **TM3PD**

MODULE FOR LEAK TEST WITH DIFFERENTIAL METHOD ON AUTOMATED SYSTEM



- Leak test up to 40 bar
- Resolution up to 0.1 Pa, differential full scale from 10 to 50 mbar
- Fully integrated pneumatics and electronics
- Test time reduced
- Ease of use and installation
- Digital interface for PLC
- Communication Interfaces RS485 and USB
- Up to 300 test tables



DESCRIPTION

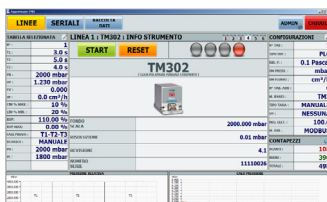
The testing cycle is based on a comparison between the product being tested and a reference volume. In this way, the effects of the pressure settlement inside the tested product are reduced and the accuracy in detecting a leak rate is increased, achieving excellent results in a quicker testing time.

TM3PD

DELTA TM3PD pneumatic modules represent the blend of traditional leak test equipment and are the best solution to integrate a reliable and compact testing station into your automated system.

TEST

DELTA TM3 can be interfaced with:



- SOFTWARE MANAGER

- Traditional PLC systems

- HMI with dedicated software

Delta **TM3PD**

Rev 04/24

SPECIFICATION

Power Supply	24 Vdc - 1 A max
Compressed Air Line	Dry, non-condensing, 5-micron filtered, and oil-free air, compliant with ISO8573-1, 6x4 mm hose fitting hose connection 4x2.5 / 6x4 / 8x6 mm Pilot pressure compatible with the instrument full scale
Sensor Calibration	Remote control software procedure
A/D Converter	2x24 bits
Pressure Regulator	External (option)
Indicators	4 LEDs: two yellow (test phases), green (passed), red (failed)
Test Counter	PASSED and FAILED totals, resettable to zero
Clock	Date and time, with supercap, 7 days back up max
Programmable parameters	Up to 300 testing tables, general testing parameters
PLC Connections	2 photocoupled inputs: START / RESET 4 photocoupled outputs: TEST RUNNING, PASSED, FAILED, ALARM 3 additional digital input (-I3)
Data Interfaces	RS485 and USB communication interfaces with Modbus protocol
Staubli® Connector	Available on external connection for leak masters (option)
Housing	Unpainted aluminium

CALIBRATION SERVICE

Each equipment is accompanied by a calibration report released by Tecna.

According to the requirements of ISO9001 standard, the calibration must be verified at specified intervals against national or international test masters.

Tecna and Marposs, through specialized personnel and certified instruments, offer a complete scheduled calibration service.

ACCESSORIES

- Pressure and flow regulators
- External module for vacuum generation
- Air filters
- Fixing brackets
- Staubli® connector assembled on a T fitting to join a Leak Master
- Dust caps included

SOFTWARE MANAGER

- Software to collect and manage the data of the tests
- Viewing, programming, management of single or multiple testing stations
- Backup and Restore archive test table
- Barcode/Qrcode/Datamatrix

HMI TERMINAL

HMI Weintek operator terminal with touchscreen display.

Preloaded software to manage multiple instruments.

Libraries for other PLCs and HMI viewers are available upon request.

Barcode/Qrcode/Datamatrix and Printer management

DIMENSIONI

