



MERLIN LINE

GAUGE COMPUTERS FOR MANUAL MEASUREMENTS



Indicators and electronic display units

Merlin line (Merlin™, Merlin Plus™ and Merlin Plus Box™), represents a range of solutions perfectly suitable for every needs in manual measurements. The Plus versions add powerful capabilities to the intuitive and user friendly interface of the Merlin thanks to the management of statistic, customizable measurements pages and detailed reports.

THE PRODUCT LINE

Displacement
Sensors



Bore Gauges
Line



Forks and
Ring Gauges



Bench
Gauges



Indicators and
Electronic
Display Units



Interface
Boxes for Data
Acquisition



Software



MERLIN

Small and robust, 8.4" display SVGA with 4:3 ratio, touch screen, True flat option;

Fanless and diskless;

Vesa 75 compliant;

N.5 USB 2.0 (including n.1 internal suitable for BT antenna);

N.1 10/100 Mbps RJ connector;

N.1 RS232 ports;

Table support and power supply included.



MERLIN^{Plus}

Compact and sturdy, 12.1" display with 4:3 ratio, XGA True flat, touch screen

Fanless and diskless;

Vesa 75 compliant;

N.6 USB 2.0 (including n.1 internal suitable for BT antenna) ;

N.2 10/100/1000 Mbps RJ connector;

N.1 RS232 ports;

Table support and power supply included.



MERLIN^{Plus}Box

PC box in a sealed enclosure, without display;

Connectable to any DVI or VGA-compatible screen, with or without an integrated touch screen;

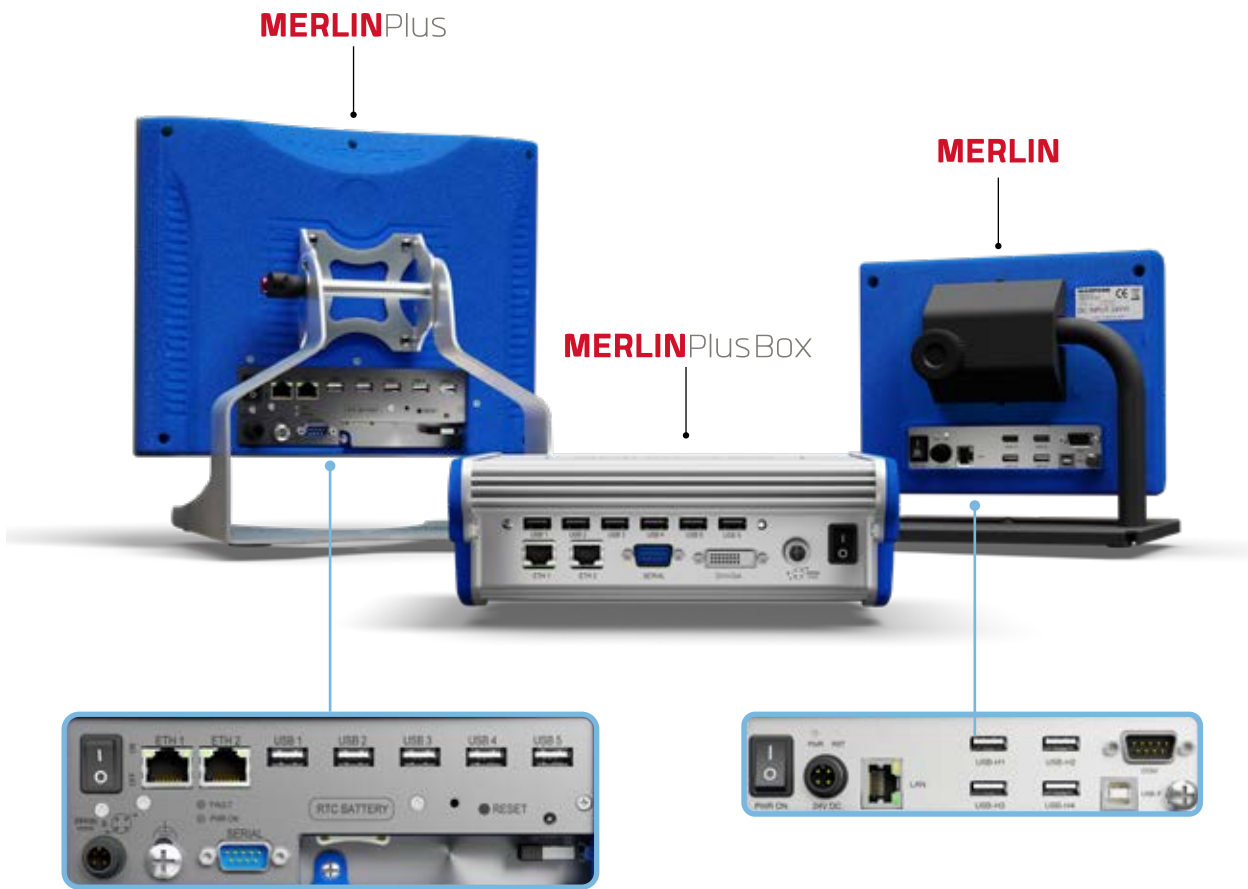
Fanless and diskless;

N.6 USB 2.0;

N.2 10/100/1000 Mbps RJ connector;

N.1 RS232 ports;

Table support and power supply included.



Product features

All the versions have the capability of:

- collecting data from a wide range of measurement devices, made by Marposs or third-parties, via USB, RS232, Ethernet or Bluetooth;
- standard multiple measurement display;
- data traceability;
- multi-language support for European and Asian languages;
- managing batches, data segregations, part counters and data storage in QDAS® (DFQ) or CSV format (including remote export through Ethernet LAN);
- multi-user password-protected management;
- statistical analysis with graphic display and numeric summary;
- Gauge Capability and R&R studies facilities.

The Plus versions have:

- customizable measurement pages;
- increased number of characteristics per each Part Program (up to 250);
- increased number of fields for data traceability;
- possibility of fast dynamic acquisitions (up to 4000 samples/s);
- multi monitor management (up to 3 additional monitors);
- reports management in PDF format;
- printing capabilities;
- configurable QR Code management to select batches, to read K-Fields, to start cycle and more;
- additional devices connectable (e.g. Aeroel gauges, Gagepod™);
- easier integration in a company network.

Displacement
Sensors



Bore Gauges
Line



Forks and
Ring Gauges



Bench
Gauges



Indicators and
Electronic
Display Units



Interface
Boxes for Data
Acquisition



Software



Application examples

Displacement
Sensors



Bore Gauges
Line



Forks and
Ring Gauges



Bench
Gauges



Indicators and
Electronic
Display Units



Interface
Boxes for Data
Acquisition



Software



Contactless measurements

Automotive glass

Shafts

EV parts

TECHNICAL SPECIFICATIONS

Main hardware characteristics			
	MERLIN	MERLIN PLUS	MERLIN PLUS BOX
Case	Plastic	Aluminium	Plastic
Protection (front panel)	IP65		IP54
Touch screen	4 wire analog-resistive	5 wire anti-reflection	External DVI connection
LCD Display Type	8.4" 4:3 SVGA, True flat option	12.1" 4:3 XGA True Flat	-
Storage media	eMMC 4GB	mSATA 60/120/240 GB	SATA 2 60/120/240 GB
Ethernet LAN	1x 10/100 Mbps RJ45 connector	2x 10/100/1000 Mbps RJ45 connector	
USB ports	4 Host + 1 Internal	5 Host + 1 internal	6 Host
Serial Port	1xRS232C		
Bench-top support	Reclinable - VESA75 compliant		Fixed - DIN rail
Power supply	24Vdc (18 ÷ 36 Vdc)		
Relative humidity	5 to 80 % (non-condensing)		
Operating temperature	0 to 50		
Dimensions LxHxD	230x180x45 mm (9"x7"x 1.8")	324x323x200 mm (12.8"x12.7"x 7.9")	200x185x86 mm (7.9"x7.3"x 3.4")
CPU	ARM9TM 1 GHz	Intel Bay Trail J1900 2.0 GHz	

HOW TO ORDER

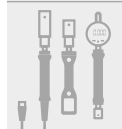
Description	Order code
MERLIN - Windows CE7, True flat, Western Operating System	B830MEADD01
MERLIN - Windows CE7, Western Operating System	B830MEADD00
MERLIN - Windows CE7, Japanese Operating System	B830MECDD00
MERLIN - Windows CE7, Korean Operating System	B830MEEDD00
MERLIN - Windows CE7, Chinese Operating System	B830MEFDD00
MERLIN PLUS - Windows 7P multi-language 2GB RAM, 60 GB SSD (*)	B830MPMEICO
MERLIN PLUS - Windows 10 IoT multi-language 4GB RAM, 60 GB SSD	B830MPMFICO
MERLIN PLUS - Windows 10 IoT multi-language 8GB RAM, 120 GB SSD	B830MPMFJDO
MERLIN PLUS BOX - Windows 7P multi-language 2GB RAM, 60 GB SSD	B830MBAABA0
MERLIN PLUS BOX - Windows 10 IoT multi-language 4GB RAM, 60 GB SSD	B830MBBBB00
MERLIN PLUS BOX - Windows 10 IoT multi-language 8GB RAM, 120 GB SSD	B830MBBCC00
MERLIN PLUS BOX - Windows 10 IoT multi-language 8GB RAM, 240 GB SSD	B830MBBDC00

(*) preferably use the Windows 10 equivalent code B830MPMFICO

Displacement
Sensors



Bore Gauges
Line



Forks and
Ring Gauges



Bench
Gauges



Indicators and
Electronic
Display Units



Interface
Boxes for Data
Acquisition



Software



PROGRAMMING TOOLS

Displacement
Sensors



Bore Gauges
Line



Forks and
Ring Gauges



Bench
Gauges



Indicators and
Electronic
Display Units



Interface
Boxes for Data
Acquisition



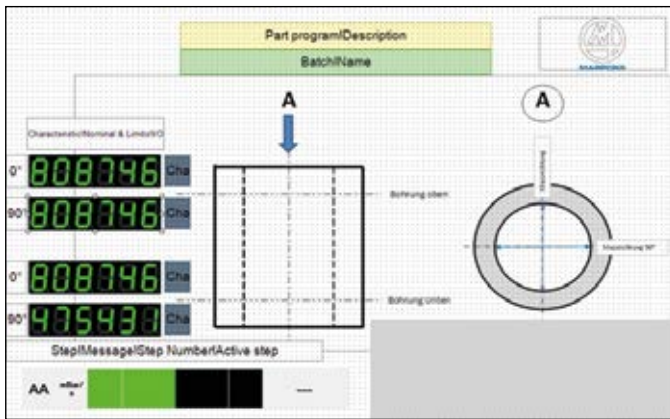
Software



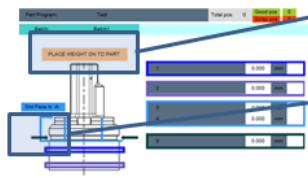
MERLIN Plus Designer

Merlin Plus Designer™ can be used to create files that can be read from the Merlin Plus software so to customize the Measure pages, using various available objects such as measuring bars, images, blinking objects, graphs, charts or many others.

Customizing each Part program or each step with dedicated pages, can help in clarifying the measure steps or in guiding the operator, thus avoiding errors in keeping production under control.



Main controls:



Label:

PLACE WEIGHT ON TO PART

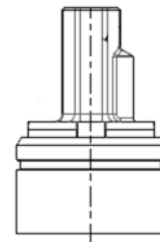
Blink:



Characteristic controls:



Picture control:



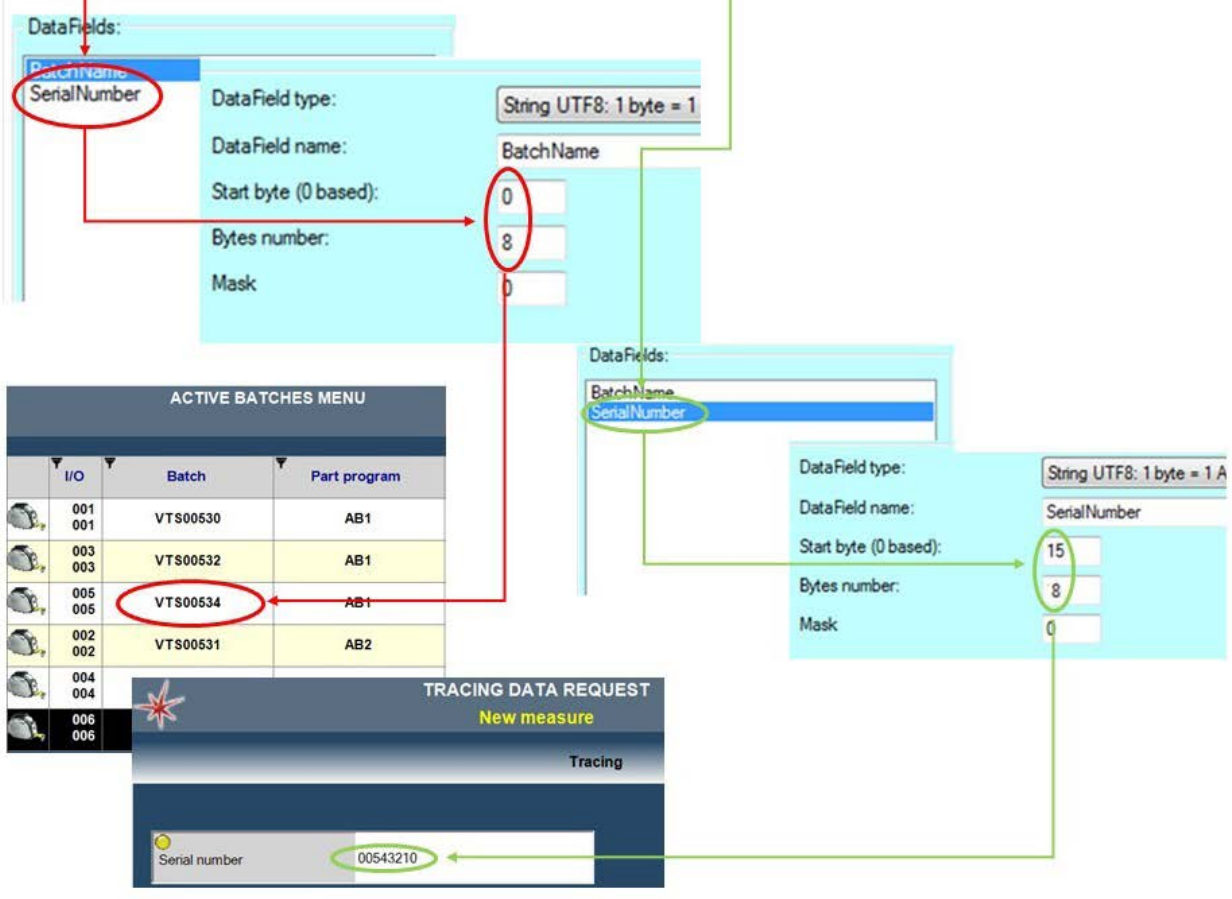


MRC (Marposs Remote Controller)

MRC is a software that runs in background, connected to the Merlin Plus software and can be used to easily configure various behaviours like QR Code / Barcode readers management and FTP or SQL export management.



VTS00534-05219-00543210



Displacement Sensors



Bore Gauges Line



Forks and Ring Gauges



Bench Gauges



Indicators and Electronic Display Units



Interface Boxes for Data Acquisition



Software



Displacement Sensors



Bore Gauges Line



Forks and Ring Gauges



Bench Gauges



Indicators and Electronic Display Units



Interface Boxes for Data Acquisition

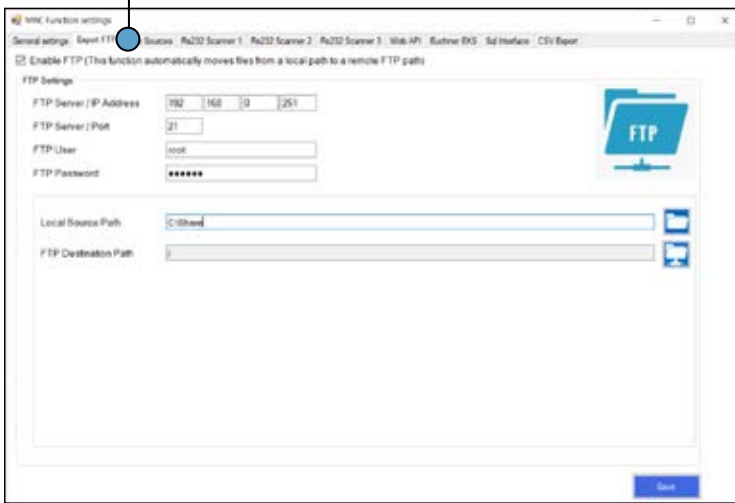


Software

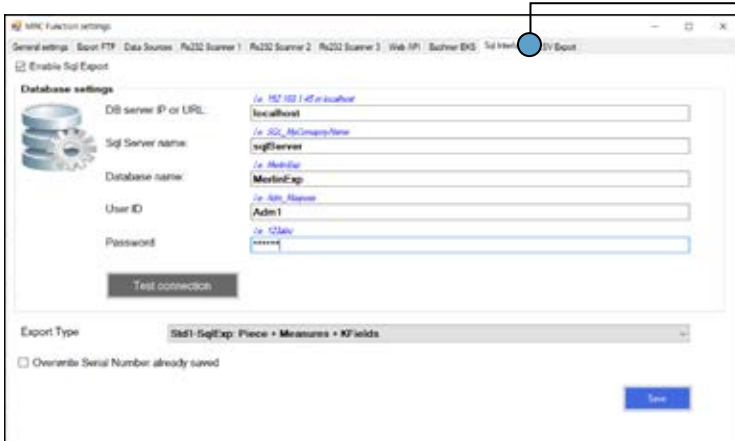


Selecting parts of the string, different functions are activated.

Export of files to a remote path via FTP



Export of files to an SQL Server



Configuration of exported CSV files

